



ALASKA DIVISION OF HOMELAND SECURITY & EMERGENCY MANAGEMENT



Daily Situation Report 26-029 • January 29, 2026

Toll-Free 1.800.478.2337

Anchorage Area 907.428.7000

SEOC 907.428.7100

<u>SEOC Preparedness Level</u> Level 1-Routine Operations	http://ready.alaska.gov	<u>Alaska Military Installation Force Protection Level:</u> FPCON Bravo
<u>NTAS Bulletin</u> There are no current advisories https://www.dhs.gov/national- terrorism-advisory-system	<u>Maritime Security (MARSEC)</u> Level:1 Minimum Appropriate Security Measures	

(Significant changes from previous situation reports are red.)

Significant Issues:

NONE

2025 October West Coast Storm Disaster:

- 74 households/216 individuals transitioned from non-congregate shelters (hotels) to longer-term housing (apartments)
- In Non-Congregate Shelter (hotels) **475**

Division of Homeland Security and Emergency Management Public Information:

For current press releases, see: <https://ready.alaska.gov/PublicInformation/PressReleases>

Department of Health (DOH):

For current information, see: <https://health.alaska.gov/en/>

Travel Alerts and Conditions:

For current driving conditions, dial 511 or visit: <https://511.alaska.gov/>

Barry Arm Landslide / Tsunami Risk:

For the latest information on the Barry Arm Landslide and Tsunami risk, click here:
<https://dggs.alaska.gov/hazards/barry-arm-landslide.html>

Earthquakes:

United States Geological Service (USGS) Earthquake Information:

[Earthquake Hazards Program | U.S. Geological Survey](#)

National Tsunami Warning Center: <https://tsunami.gov/>

Alaska Volcanoes:

Great Sitkin: Alert Level: Watch and Aviation Color Code: Orange

Shishaldin: Alert Level: Advisory and Aviation Color Code: Yellow

For Alaska Volcano updates, go to: <https://www.avo.alaska.edu/>

Air Quality Index (AQI) Advisories:

For the most up-to-date Air Quality Index Advisories:

<https://dec.alaska.gov/Applications/Air/airtoolsweb/Advisories>

Spills of Oil and Hazardous Substances:

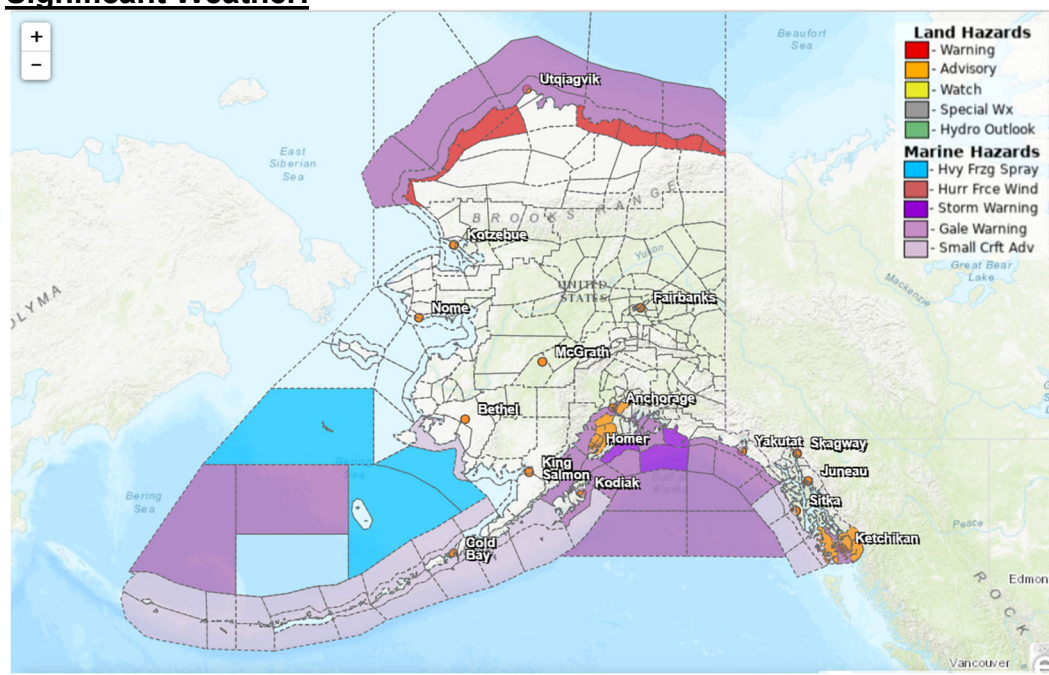
The Alaska Division of Environmental Conservation (ADEC) Spill Prevention and Response page is located at: <https://dec.alaska.gov/spar/ppr/spill-information/response/>

Alaska Cyber Security Information:

State Employees may sign up for cybersecurity notifications and alerts at:

<https://oit-int.alaska.gov/security/>

Significant Weather:



Wind Advisory in effect for:

- Ketchikan Gateway Borough; Prince of Wales Island and Annette Island from 4am to 3 pm Friday

Blizzard Warning in effect for:

- Western Arctic Coast; Northwest Arctic Coast, Central Beaufort Sea Coast and Eastern Beaufort Sea Coast until 3pm today

Winter Weather Advisory in effect for:

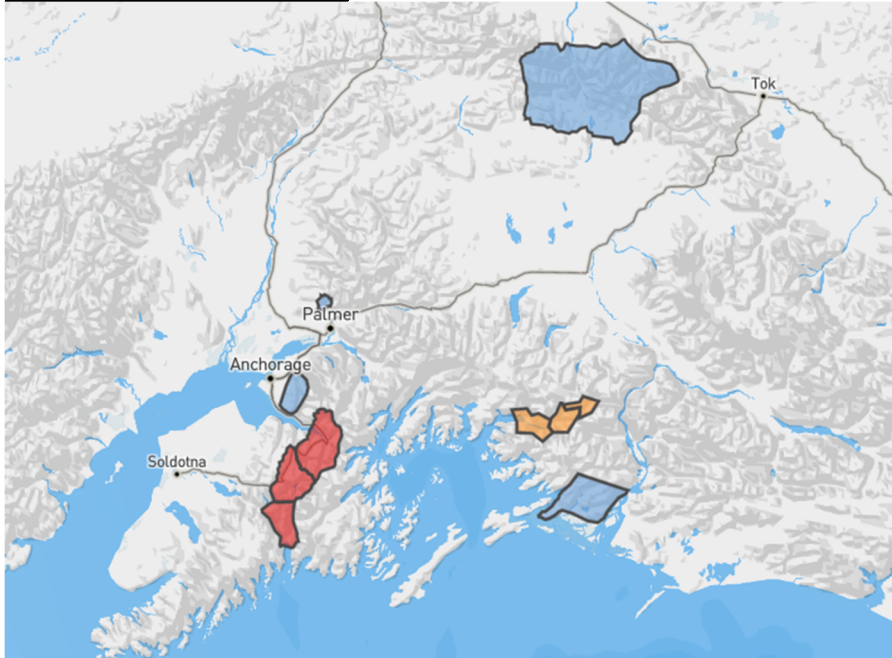
- Anchorage; Anchorage Hillside / Eagle River; SW Kenai Peninsula; NW Kenai Peninsula; Skilak Lake until 1am Friday morning

Flood Advisory in effect for:

- Ketchikan Gateway Borough until noon Friday

For more information, go to <https://www.weather.gov/arh>

Avalanche Conditions:



Turnagain Pass and Girdwood; Summit Lake; Seward and Lost Lake – High at elevations above 2,500ft, Considerable above 1,000ft, and Moderate below 1000ft
Maritime; Intermountain; Continental – Considerable at all elevations
Hatcher Pass – No data available currently

For more information and the most current avalanche conditions, go to <https://alaskasnow.org>

The Next Situation Report will be on **January 30, 2026**. A significant change in situation or threat level will prompt an interim report. This report is posted on the internet at <https://ready.alaska.gov/sitrep>.

To register for email distribution, go to: <http://list.state.ak.us/mailman/listinfo/dhsem.situation.report>.
Direct questions regarding this report to the SEOC at 907-428-7100 or seoc@alaska.gov.